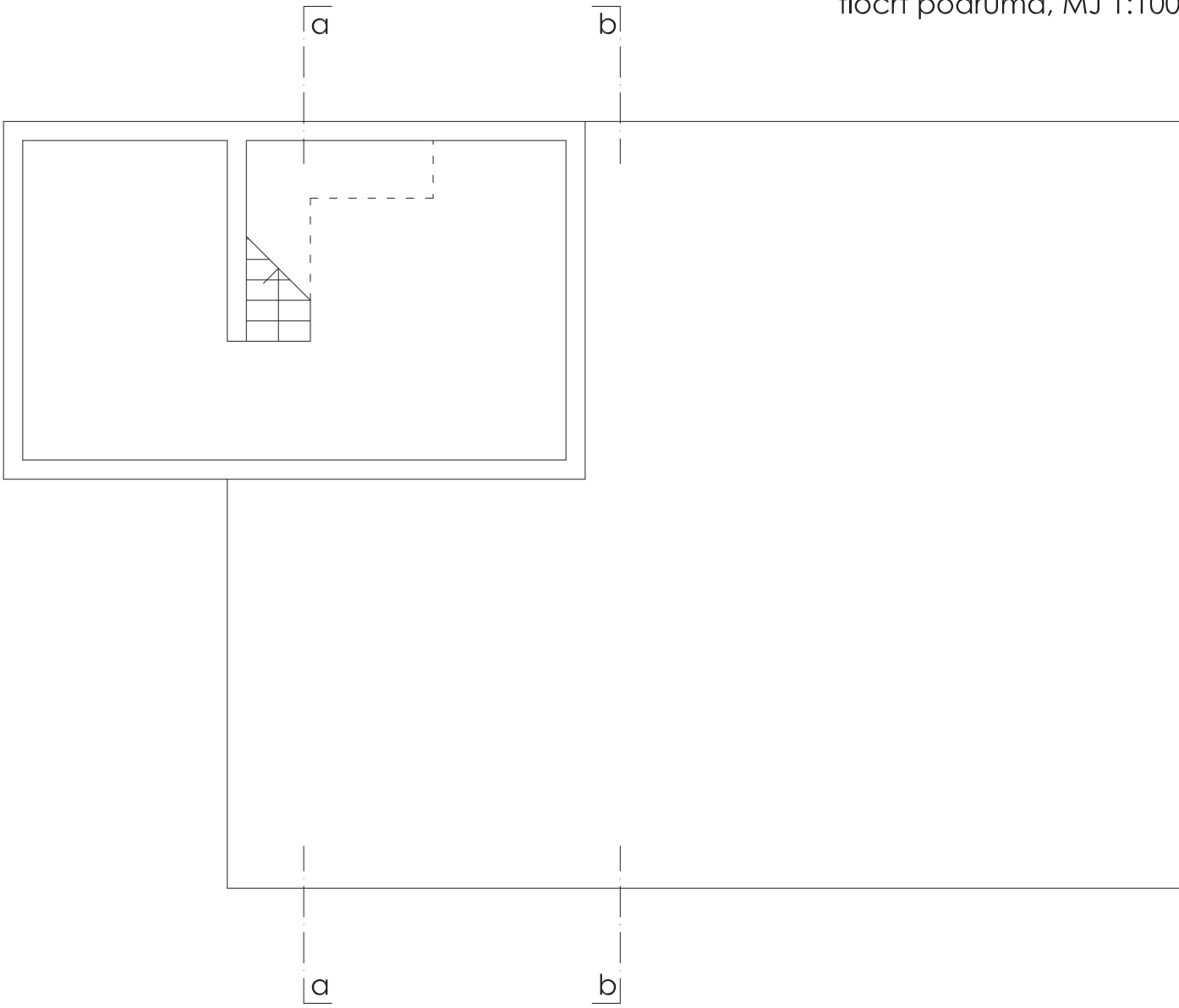
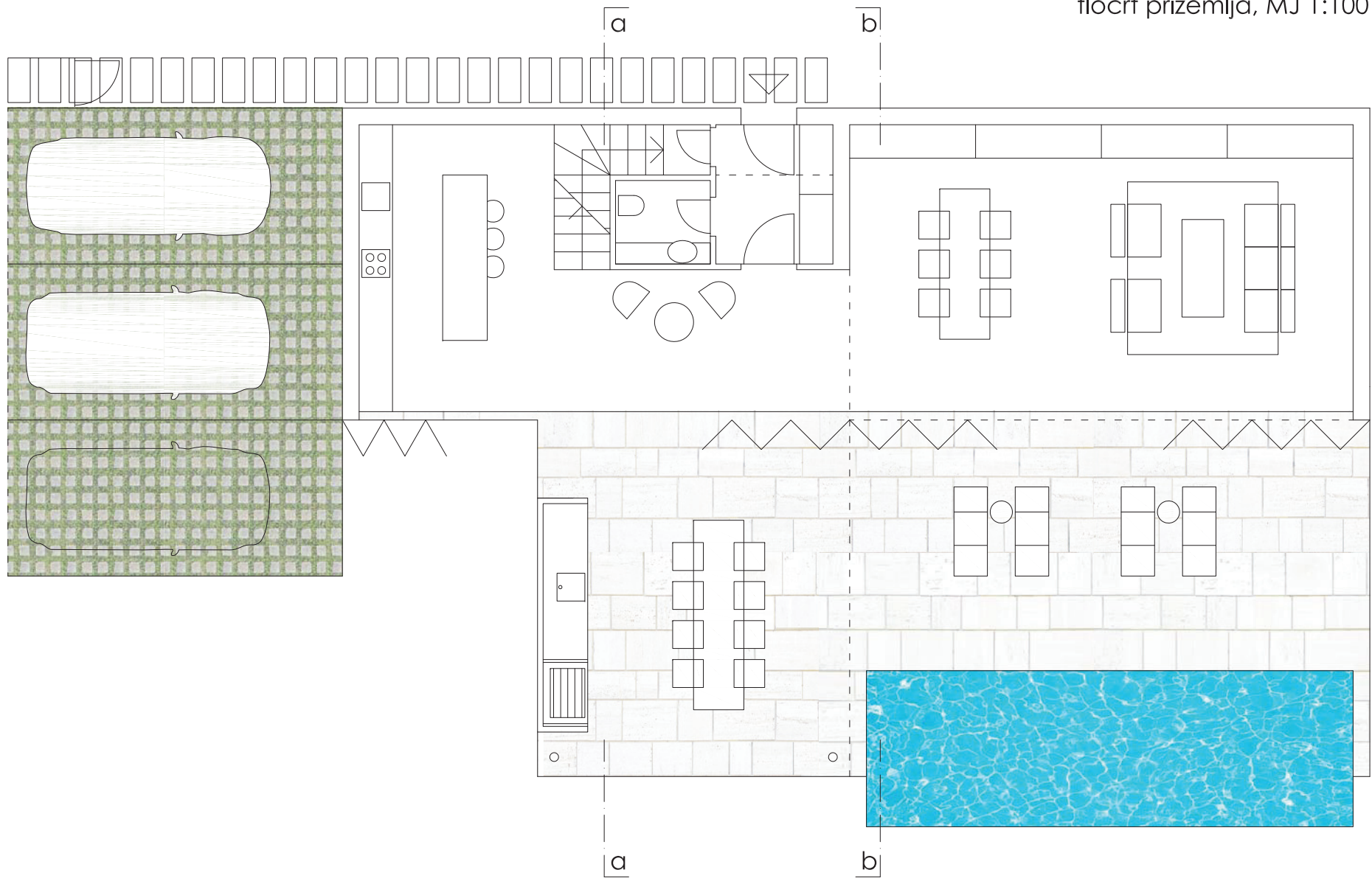


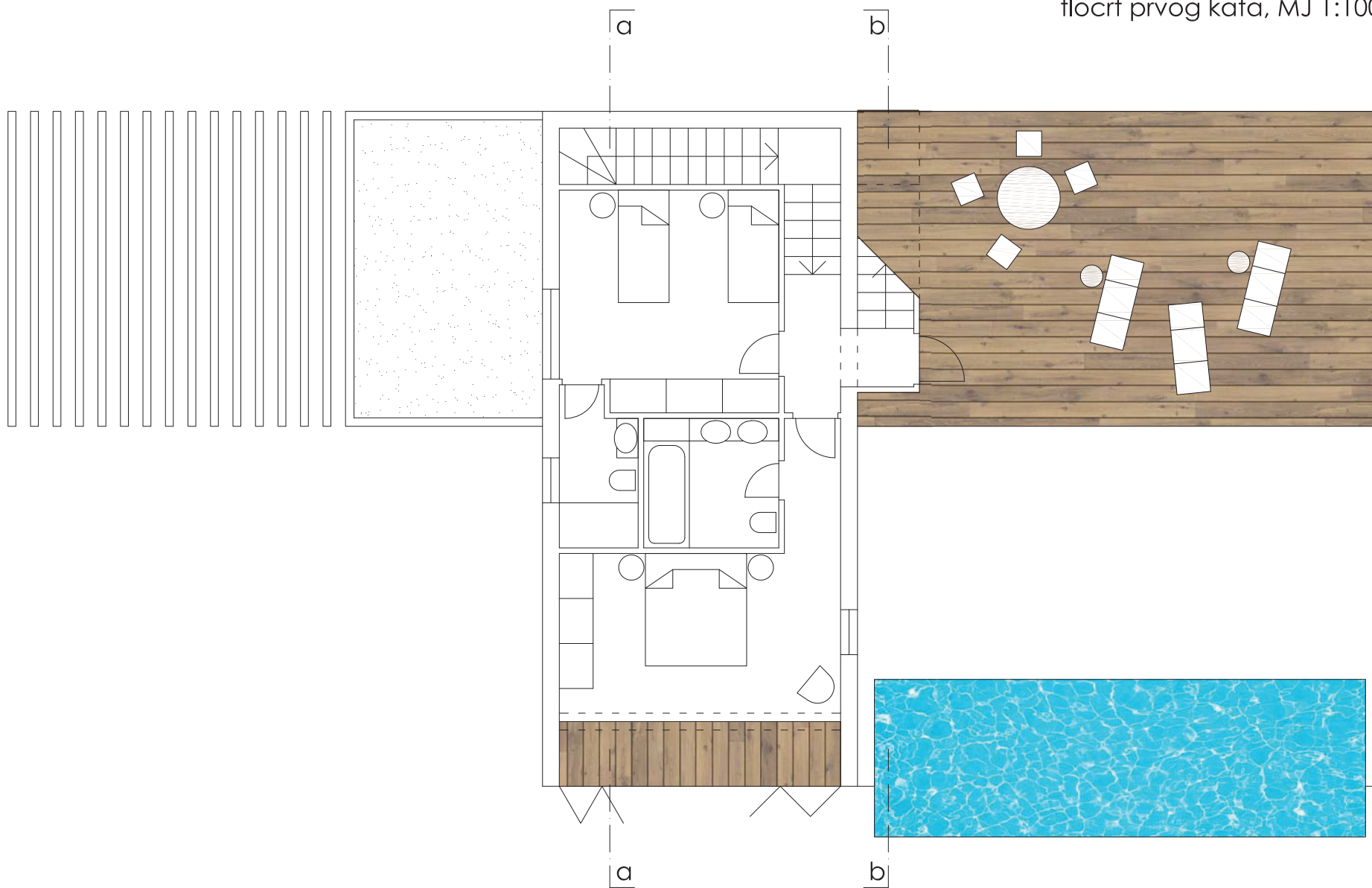
řlocrt podruma, MJ 1:100



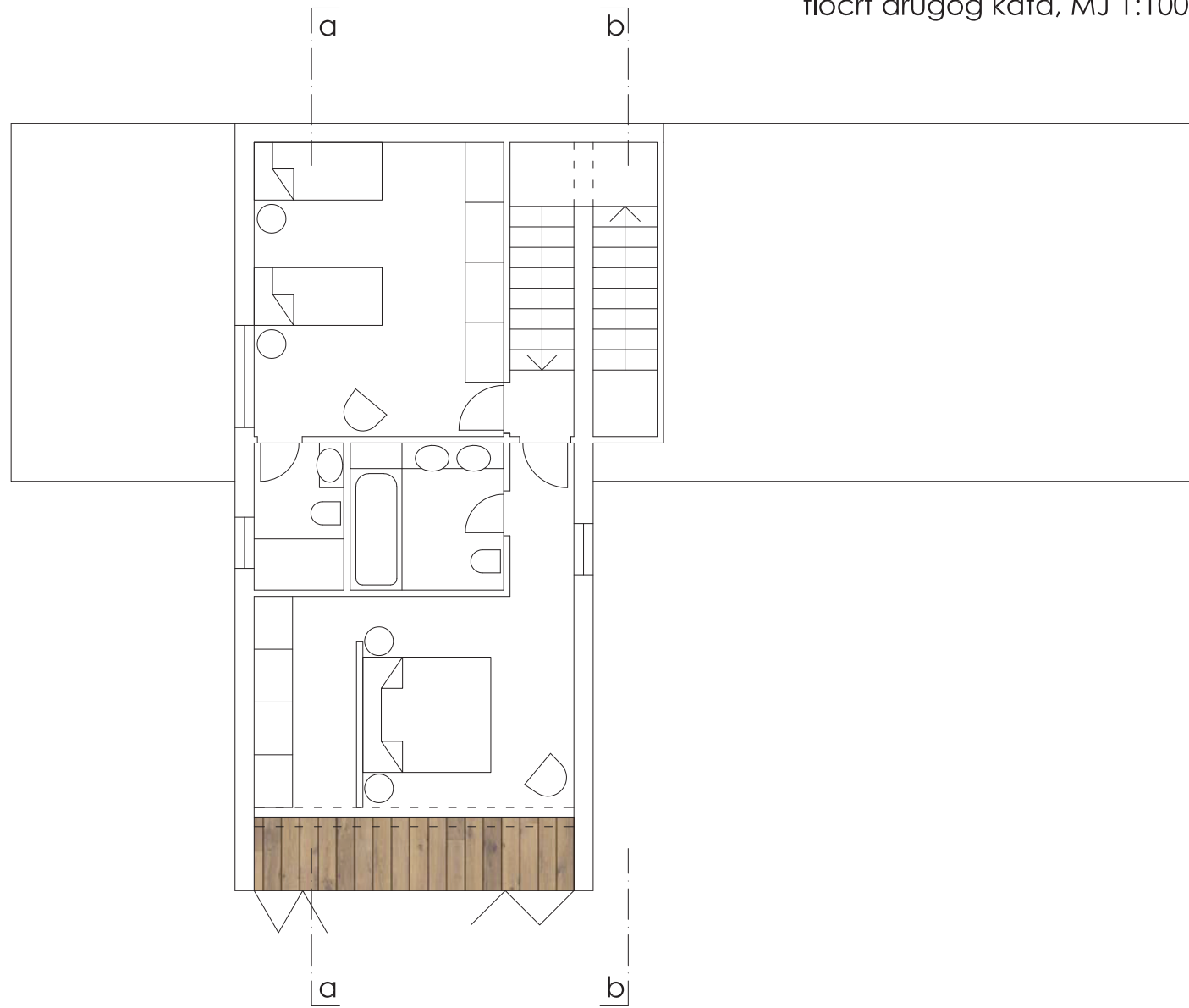
tlocrt prizemlja, MJ 1:100



flocrt prvog kata, MJ 1:100



flocrt drugog kata, MJ 1:100



**Neto površine kuće:**

---

podrum: 23,20 m<sup>2</sup>

---

stubište 4,86 m<sup>2</sup>  
podrum 36,69 m<sup>2</sup> x 0,50 = 18,34 m<sup>2</sup>

---

prizemlje: 115,46 m<sup>2</sup>

---

kuhinja 16,48 m<sup>2</sup>  
dnevni boravak i blagovaona 46,50 m<sup>2</sup>  
hodnik 14,28 m<sup>2</sup>  
wc 2,55 m<sup>2</sup>  
vjetrobran 5,25 m<sup>2</sup>  
stubište 1,70 m<sup>2</sup>  
vanjska nenatkrivena terasa 43,12 m<sup>2</sup> x 0,25 = 10,78 m<sup>2</sup>  
vanjska natkrivena terasa 35,84 m<sup>2</sup> x 0,50 = 17,92 m<sup>2</sup>  
+ bazen 24,44 m<sup>2</sup>

---

prvi kat: 66,52 m<sup>2</sup>

---

spavaća soba 17,35 m<sup>2</sup>  
kupaona 5,52 m<sup>2</sup>

spavaća soba 14,90 m<sup>2</sup>  
kupaona 3,70 m<sup>2</sup>  
hodnik 2,46 m<sup>2</sup>  
stubište 6,60 m<sup>2</sup>  
loggja 5,75 m<sup>2</sup> x 0,75 = 4,31 m<sup>2</sup>  
vanjska nenatkrivena terasa 46,74 m<sup>2</sup> x 0,25 = 11,68 m<sup>2</sup>

---

drugi kat: 60,14 m<sup>2</sup>

---

spavaća soba 19,65 m<sup>2</sup>  
kupaona 5,52 m<sup>2</sup>  
spavaća soba 17,94 m<sup>2</sup>  
kupaona 3,22 m<sup>2</sup>  
stubište 9,50 m<sup>2</sup>  
loggja 5,75 m<sup>2</sup> x 0,75 = 4,31 m<sup>2</sup>

---

**Ukupna neto površina kuće: 265,32 m<sup>2</sup>**

---